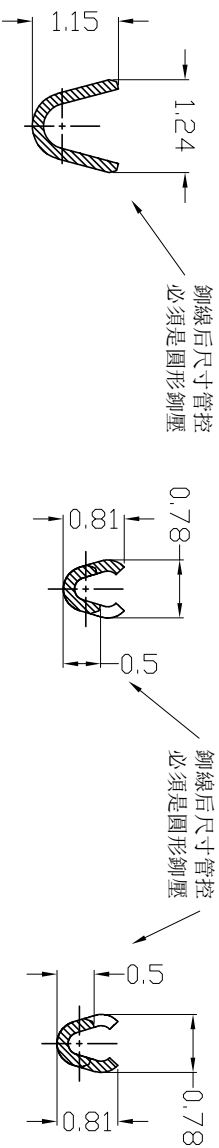
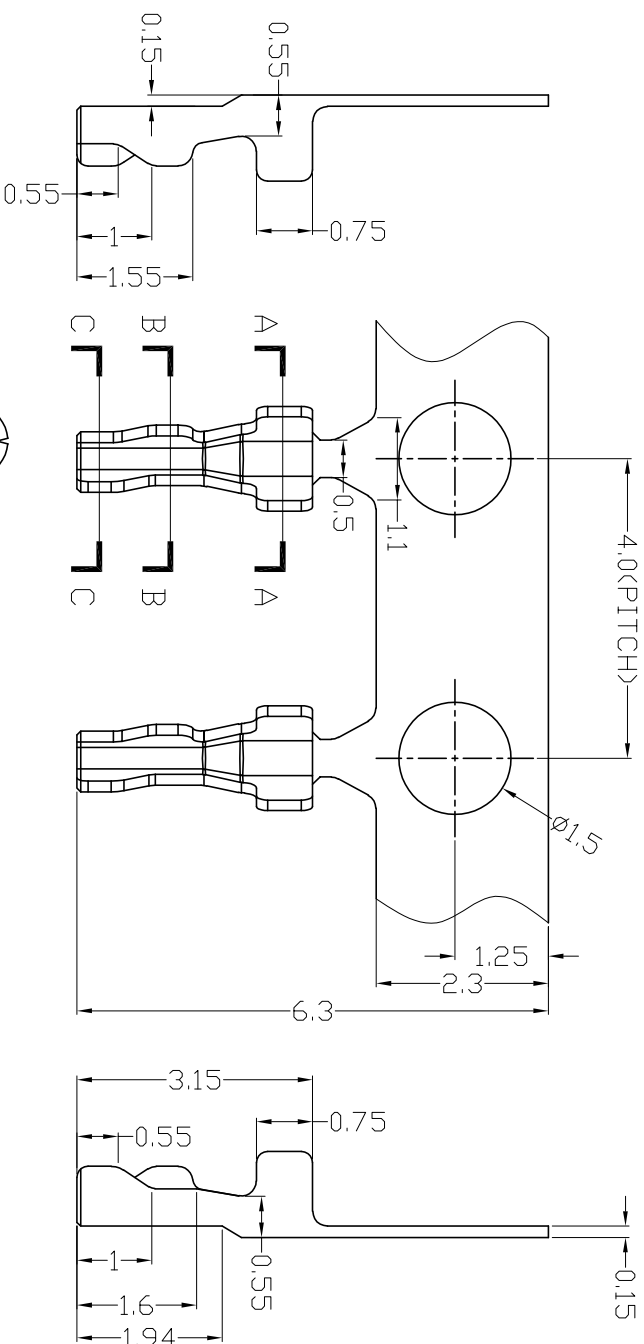


包装示意图 (端子V型口向外顺时针绕盘)



SECTION A-A

SECTION B-B

SECTION C-C

■ Main Specifications

- 额定电流 (Current rating): 1.0A AC, DC
- 额定电压 (Voltage rating): 50V AC, DC
- 温度范围 (Temperature range): -25°C T0 +85°C
- 接触电阻 (Contact resistance):  $\leq 20m\Omega$
- 绝缘电阻 (Insulation resistance):  $\geq 100M\Omega$
- 耐电压 (Withstand voltage): 500V AC/minute

Part No	Wire Range	Insulation O. D	Material	Finish	Qty/reel	Features (Used in)	Remark
B1001TV-PTS	AWG#30	0.80(MAX)	Phosphor Bronze	Tin-plated	30,000		GJS-10010-TP

**GTEER**

东莞市高嘉精密电子有限公司  
DONGGUAN GJ PRECISION ELECTRONICS CO.,LTD

PART NO: GJ-B1001TV-PTS

1.0mm BOARD IN TERMINAL CONNECTOR, PLUG TERMINAL

B1001端子产品图

VER NO: A0

CUSTOMER: ---

Conforms to The ROHS&REACH Instruction

APPROVED BY: APPROVED	PROJ:	TOLERANCE	LTR	REVISION RECORD	NAME	DATE
CHECKED BY: CHECKED	UNIT: mm	-1	标记1	修改内容1	姓名1	日期1
DRAWN BY: yiliangdong	SCALE: --	1-5	标记2	修改内容2	姓名2	日期2
DATE: 2023-03-11	SHEET: 1/1	5-15	标记3	修改内容3	姓名3	日期3
	A4	15-30	标记4	修改内容4	姓名4	日期4
		30-				
		(ANGLE) .X $\pm 10^\circ$				