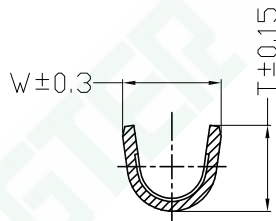
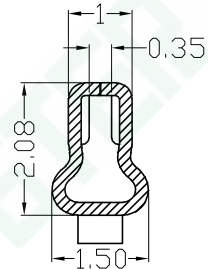


SECTION A-A



SECTION B-B



SECTION C-C


■ Main Specifications

- 额定电流 (Current rating): 2.0A AC, DC
- 额定电压 (Voltage rating): 100V AC, DC
- 温度范围 (Temperature range): -25°C TO + 105°C
- 接触电阻 (Contact resistance): $\leq 20m\Omega$
- 绝缘电阻 (Insulation resistance): $\geq 1000m\Omega$
- 耐电压 (Withstand voltage): 800V AC/minute

规格表	Part No	Wire Range	Insulation O.D	Material	Finish	Qty/reel	Features(Used in)	DIM"W"	DIM"T"	Remark
	A2001TF-PTS	AWG#28~#24	1.60 (MAX)	Phosphor Bronze	Tin-plated	10,000	GJ-A2001 SOCKET HOUSIN SERIES	1.65	1.38	
	A2001TF-PTS-HS	AWG#22	1.60 (MAX)	Phosphor Bronze	Tin-plated	10,000	GJ-A2001 SOCKET HOUSIN SERIES	1.75	1.68	HS铆线脚加高款

GTER® 东莞市高嘉精密电子有限公司
DONGGUAN GJ PRECISION ELECTRONICS Co.Ltd.
PART NO: GJ-A2001TF-PTS
2.00mm WIRE TO BOARD CONNECTOR, SOCKET TERMINAL

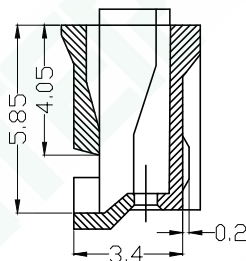
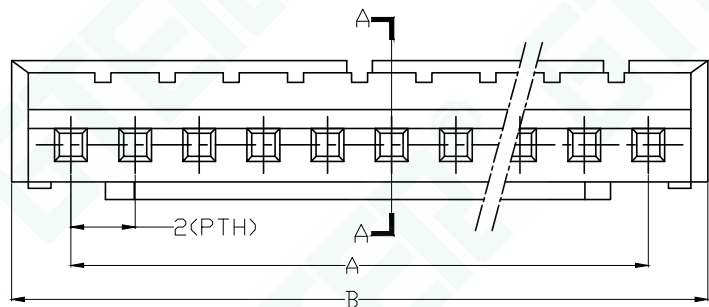
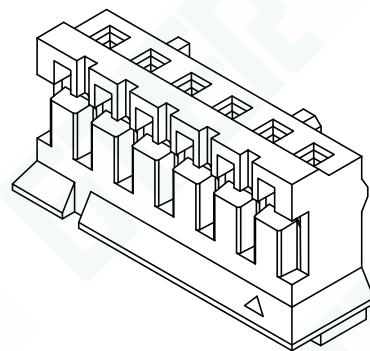
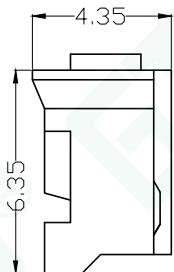
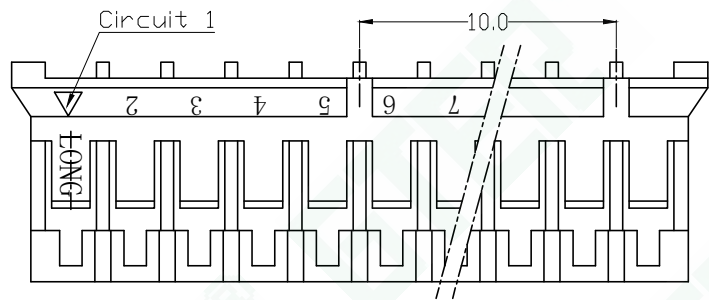
APPROVED BY: APPROVED
CHECKED BY: CHECKED
DRAWN BY: yiliangdong
DATE: 2022-10-14
A2001端子 产品图

PROJ: 
UNIT: mm
SCALE: --
SHEET: 1/1 A4
VER NO: AO

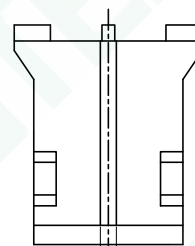
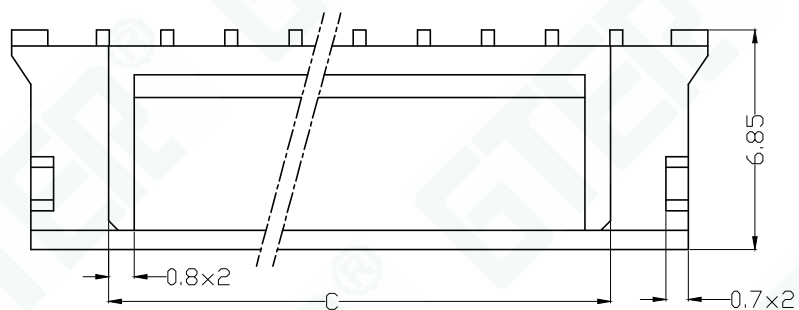
TOLERANCE	LTR
-1 ±0.10	标记1 修改内容1
1-5 ±0.15	标记2 修改内容2
5-15 ±0.20	标记3 修改内容3
15-30 ±0.25	标记4 修改内容4
30- ±0.30	
(ANGLE) .X ±10°	

REVSION RECORD		NAME	DATE
		姓名1	日期1
		姓名2	日期2
		姓名3	日期3
		姓名4	日期4

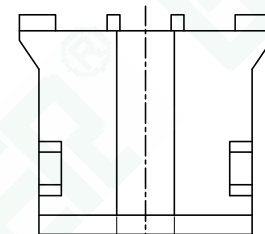
CUSTOMER: ---
Conforms to The RoHS&REACH Instruction



SECTION A-A



2 Circuit



3 Circuit



■ Main Specifications

- 接触电阻 (Contact resistance): $\leq 20m\Omega$
- 绝缘电阻 (Insulation resistance): $\geq 1000M\Omega$
- 额定电压 (Rated voltage): 250V AC DC
- 额定电流 (Rated current): 2.0A AC DC
- 耐电压 (Withstand Voltage): 800V AC/minute
- 温度范围 (Temperature Range): $-25^{\circ}C \sim +85^{\circ}C$

■ 产品编码简介: GJ-A2002HF-**-AON

① ② ③ ④

1. 系列号;
2. 母胶壳;
3. Pin位数;
4. Nylon66 UL94V-0 (本色)

■ 适配 GJ-A2002 WAFER SERIES.

■ 适配 GJ-A2002 SOCKET TERMINAL.

Poles	Dimensions(mm)			Q'ty/ bag
	A	B	C	
2P	2.00	4.50	/	1,000
3P	4.00	6.50	/	1,000
4P	6.00	8.50	3.60	1,000
5P	8.00	10.50	5.60	1,000
6P	10.00	12.50	7.60	1,000
7P	12.00	14.50	9.60	1,000
8P	14.00	16.50	11.60	1,000
9P	16.00	18.50	13.60	1,000
10P	18.00	20.50	15.60	1,000
11P	20.00	22.50	17.60	1,000
12P	22.00	24.50	19.60	1,000
13P	24.00	26.50	21.60	1,000
14P	26.00	28.50	23.60	1,000
15P	28.00	30.50	25.60	1,000
16P	30.00	32.50	27.60	1,000

GTER® 东莞市高嘉精密电子有限公司
DONGGUAN GJ PRECISION ELECTRONICS Co.Ltd.

PART NO: GJ-A2001HF-**-AON

2.00mm WIRE TO BOARD CONNECTOR, SOCKET HOUSING

APPROVED BY: APPROVED

CHECKED BY: CHECKED

DRAWN BY: yiliangdong

DATE: 2021-11-25

A2001胶壳 产品图

PROJ:

UNIT: mm

SCALE: --

SHEET: 1/1 A4

VER NO: AO

TOLERANCE

-1 ± 0.10

1-5 ± 0.15

5-15 ± 0.20

15-30 ± 0.25

30- ± 0.30

(ANGLE) .X $\pm 10^{\circ}$

LTR

标记1

标记2

标记3

标记4

CUSTOMER: ---

REVISION RECORD

修改内容1

修改内容2

修改内容3

修改内容4

NAME

姓名1

姓名2

姓名3

姓名4

DATE

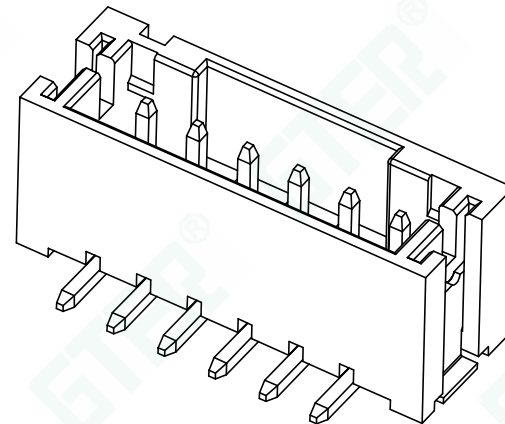
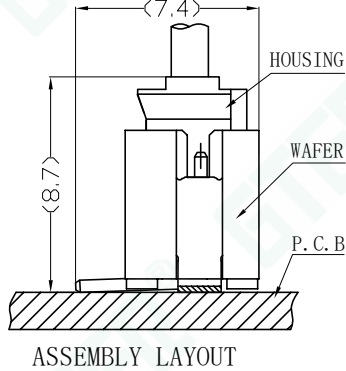
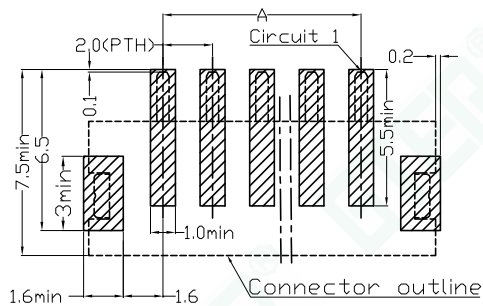
日期1

日期2

日期3

日期4

Conforms to The RoHS&REACH Instruction



■ Main Specifications

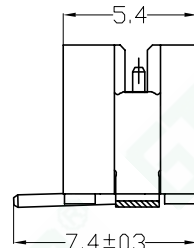
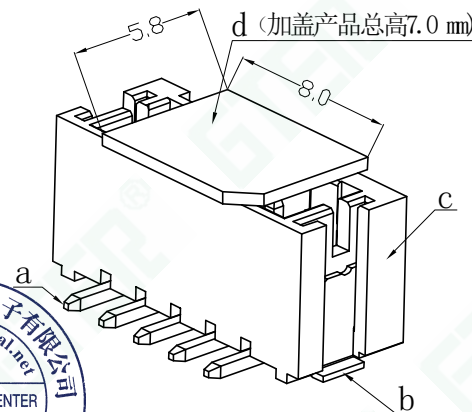
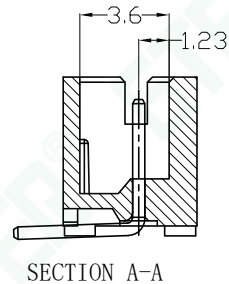
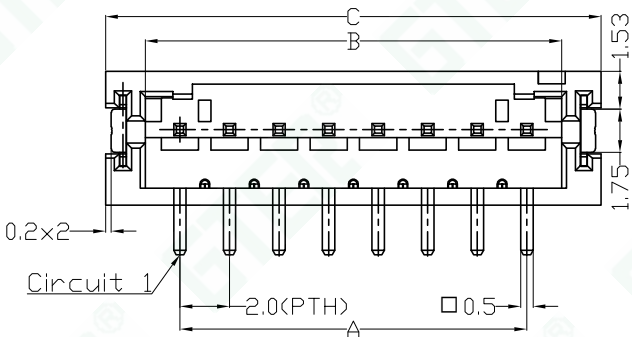
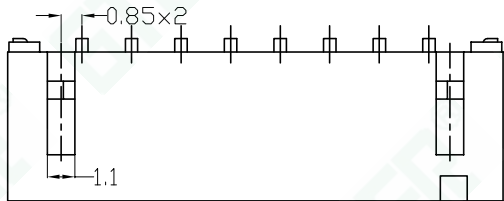
- 接触电阻 (Contact resistance): $\leq 20m\Omega$
- 绝缘电阻 (Insulation resistance): $\geq 1000M\Omega$
- 额定电压 (Rated voltage): 100V AC DC
- 额定电流 (Rated current): 2.0A AC DC
- 耐电压 (Withstand Voltage): 800V AC/minute
- 温度范围 (Temperature Range): $-25^{\circ}C \sim +105^{\circ}C$

■ 产品编码简介: GJ-A2001WVS-**-FON

① ② ③ ④

1. 系列号;
2. 立式贴板针座;
3. Pin位数;
4. LCP UL94V-0 (本色)

■ 适配 GJ-A2001 SOCKET HOUSING SERIES.



Poles	Dimensions(mm)			Q'ty/ reel
	A	B	C	
2P	2.00	4.80	8.00	700
3P	4.00	6.80	10.00	700
4P	6.00	8.80	12.00	700
5P	8.00	10.80	14.00	700
6P	10.00	12.80	16.00	700
7P	12.00	14.80	18.00	700
8P	14.00	16.80	20.00	700
9P	16.00	18.80	22.00	700
10P	18.00	20.80	24.00	700
11P	20.00	22.80	26.00	700
12P	22.00	24.80	28.00	700
13P	24.00	26.80	30.00	700
14P	26.00	28.80	32.00	700
15P	28.00	30.80	34.00	700
16P	30.00	32.80	36.00	700

组成序号	名称	材质
a	0.5方pin针	青铜镀高温亮锡
b	接地片	磷铜镀高温亮锡
c	WAFER 主体	LCP(本色) UL94V-0
d	吸盖	LCP(本色) UL94V-0

GTER® 东莞市高嘉精密电子有限公司
DONGGUAN GJ PRECISION ELECTRONICS Co.Ltd.

PART NO: GJ-A2001WVS-**-FON

2.00mm WIRE TO BOARD CONNECTOR, WAFER (V-SMT TYPE)

APPROVED BY: APPROVED

CHECKED BY: CHECKED

DRAWN BY: yiliangdong

DATE: 2021-11-25

A2001立式贴板针座产品图

PROJ:

UNIT: mm

SCALE: --

SHEET: 1/1 A4

VER NO: AO

TOLERANCE

-1 ±0.10

1-5 ±0.15

5-15 ±0.20

15-30 ±0.25

30- ±0.30

(ANGLE) .X ±10°

LTR

标记1

标记2

标记3

标记4

CUSTOMER: ---

REVISION RECORD

修改内容1

修改内容2

修改内容3

修改内容4

NAME

姓名1

姓名2

姓名3

姓名4

DATE

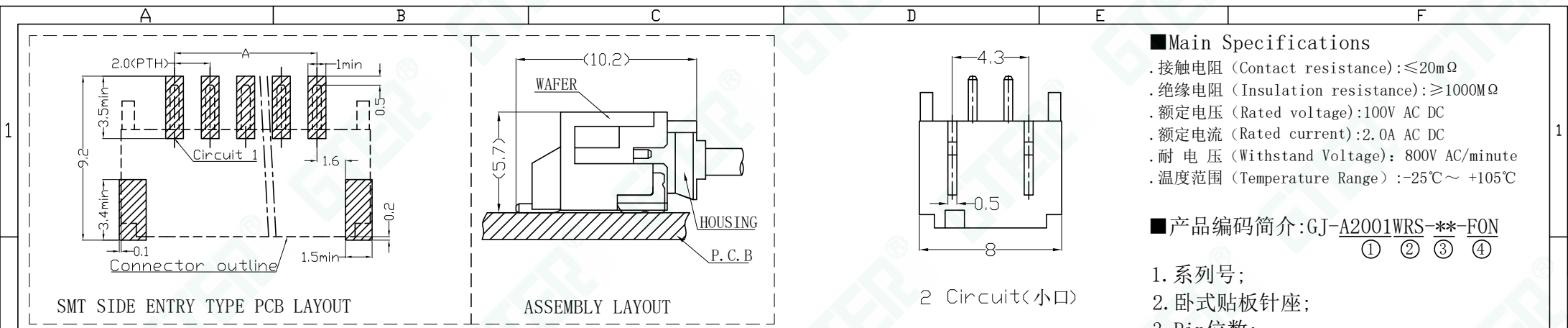
日期1

日期2

日期3

日期4

Conforms to The RoHS&REACH Instruction

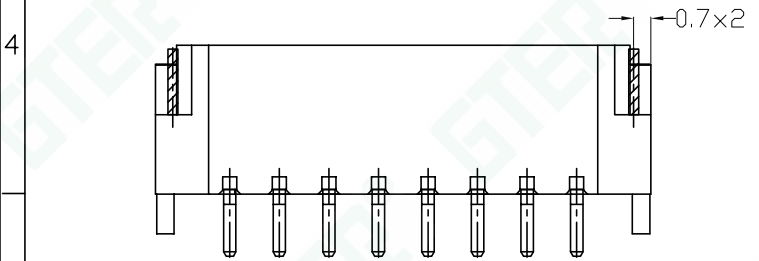
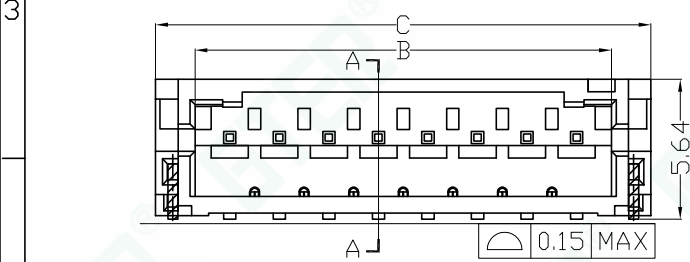
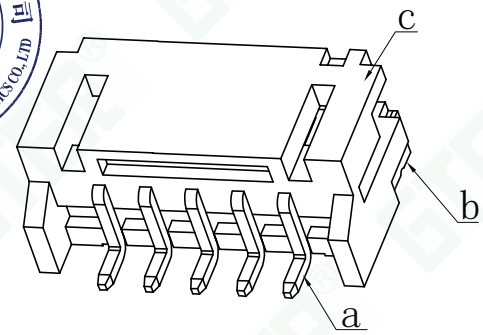
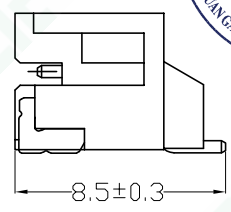
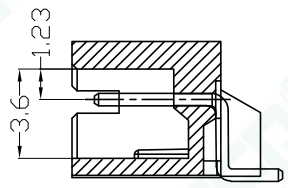
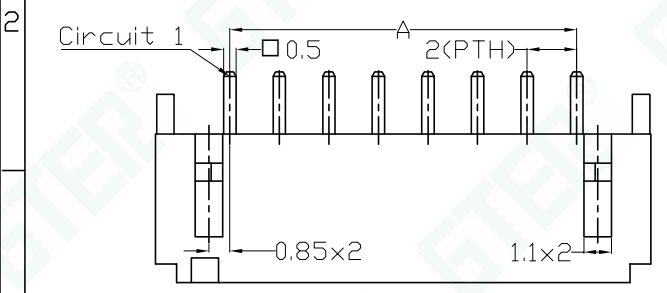


- Main Specifications
- 接触电阻 (Contact resistance): $\leq 20m\Omega$
 - 绝缘电阻 (Insulation resistance): $\geq 1000M\Omega$
 - 额定电压 (Rated voltage): 100V AC DC
 - 额定电流 (Rated current): 2.0A AC DC
 - 耐电压 (Withstand Voltage): 800V AC/minute
 - 温度范围 (Temperature Range): $-25^{\circ}C \sim +105^{\circ}C$

■ 产品编码简介: GJ-A2001WRS-**-FON
① ② ③ ④

1. 系列号;
2. 卧式贴板针座;
3. Pin位数;
4. LCP UL94V-0 (本色)

■ 适配 GJ-A2001 SOCKET HOUSING SERIES.



Poles	Dimensions(mm)			Q'ty/ reel
	A	B	C	
2P	2.00	4.80	8.00	1,000
3P	4.00	6.80	10.00	1,000
4P	6.00	8.80	12.00	1,000
5P	8.00	10.80	14.00	1,000
6P	10.00	12.80	16.00	1,000
7P	12.00	14.80	18.00	1,000
8P	14.00	16.80	20.00	1,000
9P	16.00	18.80	22.00	1,000
10P	18.00	20.80	24.00	1,000
11P	20.00	22.80	26.00	1,000
12P	22.00	24.80	28.00	1,000
13P	24.00	26.80	30.00	1,000
14P	26.00	28.80	32.00	1,000
15P	28.00	30.80	34.00	1,000
16P	30.00	32.80	36.00	1,000

成品	组成序号	名称	材质
料号: W2002RS-A**-FON 品名: 2.0mm 卧贴针座	a	0.5方pin针	青铜镀高温亮锡
	b	接地片	磷铜镀高温亮锡
	c	WAFER 主体	LCP(本色) UL94V-0

GTER® 东莞市高嘉精密电子有限公司
DONGGUAN GJ PRECISION ELECTRONICS Co.Ltd.

PART NO: GJ-A2001WRS-**-FON

2.00mm WIRE TO BOARD CONNECTOR, WAFER (R-SMT TYPE)

APPROVED BY: APPROVED
CHECKED BY: CHECKED
DRAWN BY: yiliangdong
DATE: 2021-11-25
A2001卧式贴板针座产品图

PROJ:
UNIT: mm
SCALE: --
SHEET: 1/1 A4
VER NO: AO

TOLERANCE	LTR	REVISION RECORD	NAME	DATE
-1 ±0.10	标记1	修改内容1	姓名1	日期1
1-5 ±0.15	标记2	修改内容2	姓名2	日期2
5-15 ±0.20	标记3	修改内容3	姓名3	日期3
15-30 ±0.25	标记4	修改内容4	姓名4	日期4
30- ±0.30	CUSTOMER: ---			
(ANGLE) .X ±10°	Conforms to The RoHS&REACH Instruction			

A

B

C

D

E

F